

GIANT SCIENCE LEAPS

318+81 Faculty FTE, 291 Staff FTE; 4565 Undergraduates, 1366 Graduate Students

55 majors spanning the Physical, Life, and Data & Computational sciences

Responsible for delivering 21% of undergraduate credit hours (7% intra-College)

ACTUARIAL SCIENCES

BIOLOGICAL SCIENCES

CHEMISTRY

COMPUTER SCIENCE

DATA SCIENCE



**EARTH, ATMOSPHERIC, AND
PLANETARY SCIENCES**

MATHEMATICS

PHYSICS AND ASTRONOMY

STATISTICS

Our vision for excellence:

**STRENGTHEN PURDUE BY
STRENGTHENING SCIENCE**

PURDUE
UNIVERSITY®

150
YEARS
OF
GIANTLEAPS®

CREATING A TOP-20 COLLEGE OF SCIENCE

National leadership in key differentiated areas

Data science, actuarial, cyber, chemistry, space, ...

Student body drawn from the best in the nation

Highly competitive programs that lift Purdue's ranking

Top-tier research quality, productivity, connectivity

Uniform strength across physical, life & data sciences

Enhanced facilities to support learning & discovery

STEM building, data science, Lilly Hall life sciences hub

STEPS TOWARD OPERATIONAL EXCELLENCE

Building the foundations for excellence

Upgrading talent, raising expectations, perfecting execution

Investing to reinforce core STEM strengths

New facilities, computer science and data science Moves

Driving better outcomes, better management decisions

Restructuring operations where needed, budget overhauls, ...

Thinking strategically, acting decisively, retaining agility

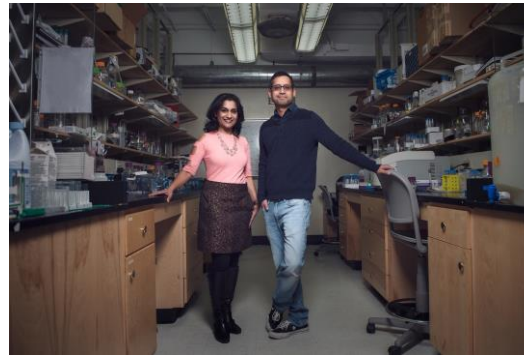
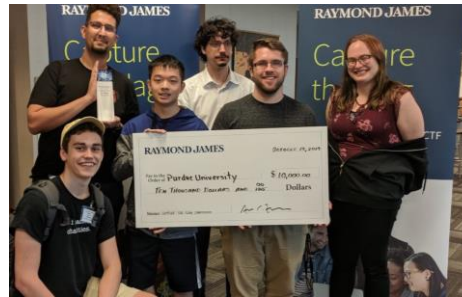
Top line growth, cost control, more efficient teaching delivery

Leading by example, prioritizing scientific excellence

HIGHLIGHTS I

Competing with the best of the best... and winning

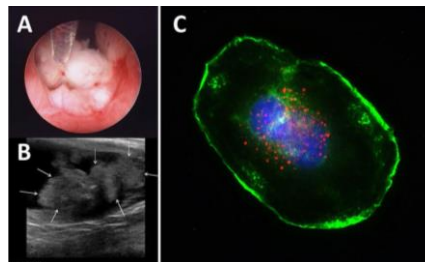
- **Meteoric rises in student and faculty quality**
- **Year-on-year improvements in student demand, competitiveness, selectivity, and success**
- **Multiple #1 programs**
- **Excellence at scale**
- **Brilliant Purdue partners**



HIGHLIGHTS II

Competing with the best of the best... and winning

- **New buildings, new joint majors, record hiring surge**
- **Faculty reset, leadership reset, pipeline building**
- **Major investments in AI, quantum, space, cyber, ...**
- **Data Mine, multiple Discovery Park Centers and leaders**
- **Revamped scholarship program, six-fold expansion**



PURDUE
UNIVERSITY®

15 YEARS OF
GIANTLEAPS

NEXT STEPS



- **Maintain a vigorous, single-minded focus on quality and execution**
- **Accelerate our work to lead and to partner, integrate, and connect across campus**
- **Prioritize the investments necessary for excellence**
- **Continue to deliver a high return on investment**